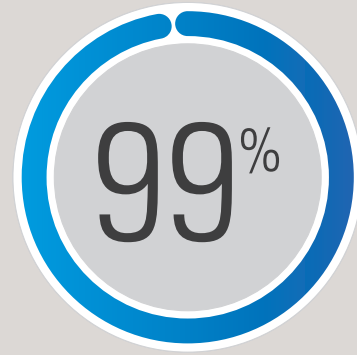
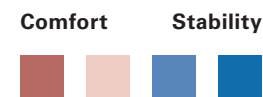
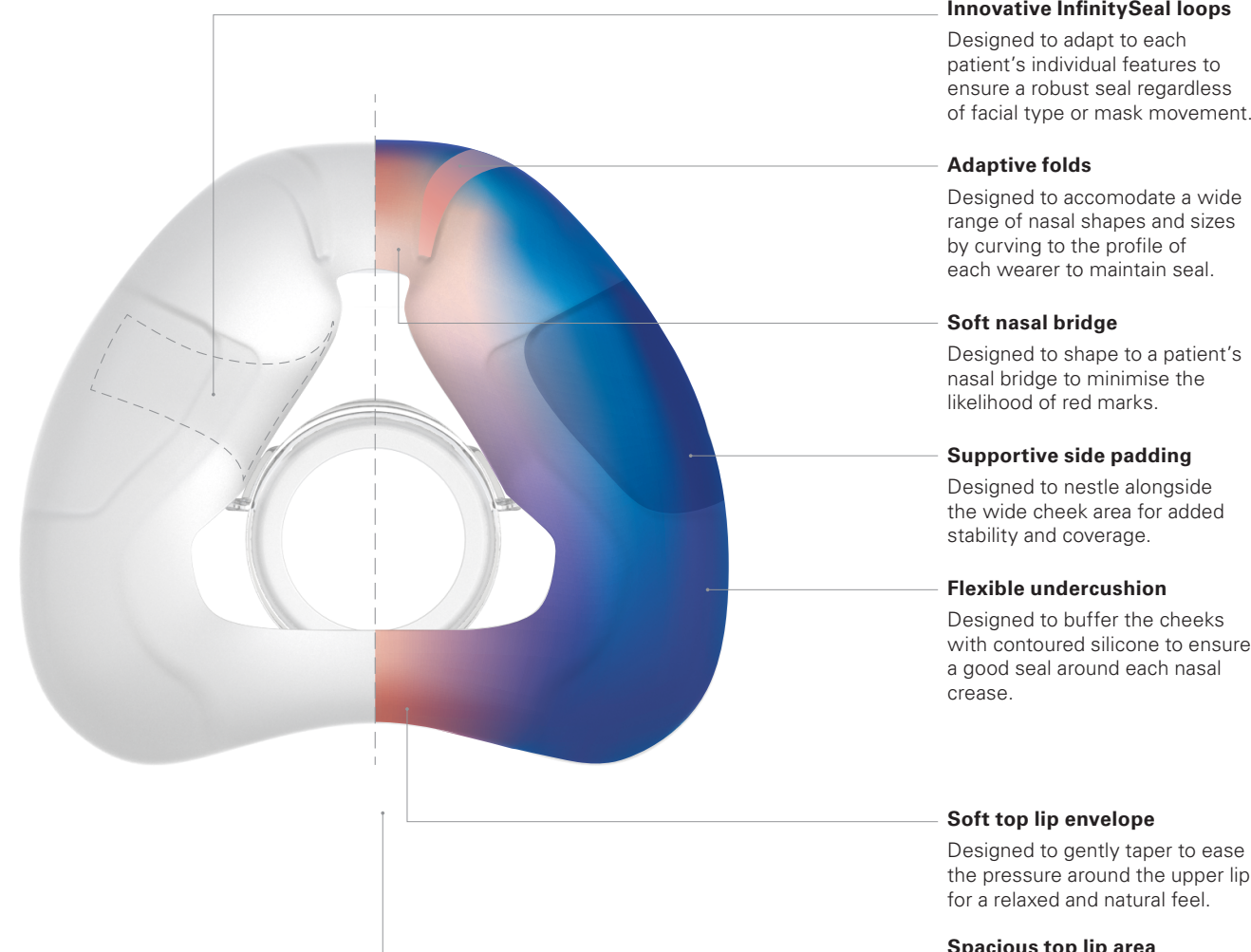


In a ResMed international study, AirFit N20 fit 99.4% of all patients.¹



Evolving cushion technology: variable thickness designed for more comfort and stability



We provide the official document of the manufacturer
www.multidoctorshop.com



- Ensure the magnets on the lower straps are unclipped.
- If they are clipped, detach them by twisting and pulling them away from the frame.



- Pull the headgear over the head making sure the ResMed logo is facing outwards.



- Position the lower straps so they both sit below the ears.
- Bring each of the magnets up to meet their corresponding clips on the frame.



- Adjust the fastening tabs on the upper straps until the mask feels even, stable and comfortable.
- Reattach the fastening tabs.



- Repeat Step 4 with the lower straps.



- Connect the device's air tube to the elbow, then click the elbow into the front of the mask.
- Start the device.

Refer to the user guide for further instructions.



Additional options

- A patient can position the lower part of the headgear over or under their hair to suit any hairstyle preference.

¹ ResMed AirFit N20 internal global fitting study of 159 existing ResMed patients, conducted 12/11/2015 ; ID A3697629.
² ResMed internal study of 24 existing ResMed patients, conducted between 23/11/2015 - 21/12/2015 comparing their current nasal mask with AirFit N20 mask with AirFit N20 ; ID A3695085.

ResMed Ltd
1 Elizabeth Macarthur Drive
Bella Vista NSW 2153 Australia

Distributed by
ECTREPI ResMed (UK) Ltd 96 Jubilee Avenue
Milton Park Abingdon Oxfordshire OX14 4RW UK

AirFit and InfinitySeal are trademarks of ResMed Ltd.
Specifications may change without notice.
© 2016 ResMed Ltd. 1019720/1 2016-10



The compact nasal mask designed to easily fit everyone



Every patient's face is different, but with our new AirFit N20, fitting a broad range of patients can be easy. This compact nasal mask gives patients a clear line of sight and accommodates their movements thanks to the InfinitySeal™ silicone cushion – designed to seal robustly regardless of facial shape or size.

Easy to fit

In a ResMed international study, our new AirFit N20 fit 99.4% of all patients tested.¹ Set patients up right the first time: the silicone cushion is designed to adapt to different face shapes and sizes.

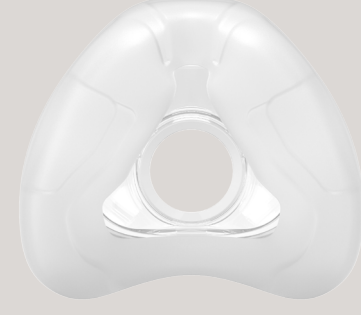
Comfortable to use

There's lightness and softness all around – from the cushion to the frame to the headgear.

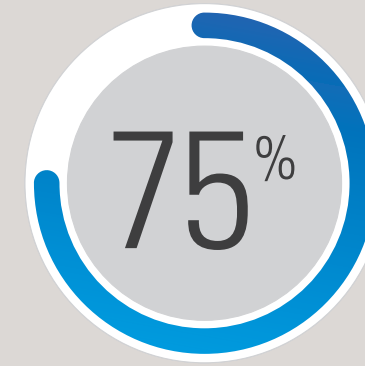
Visual freedom

With its streamlined, minimal-contact fit and under-eye frame, the AirFit N20 allows patients to read or watch TV in bed.

At ResMed, we believe it's important to have a seal that inspires confidence. AirFit N20's combination of flexible frame and adaptive cushion design offers a stable, reliable seal for a wider range of patients.



In a recent ResMed study, 75% of patients found AirFit N20 provides greater stability than their current nasal mask.²

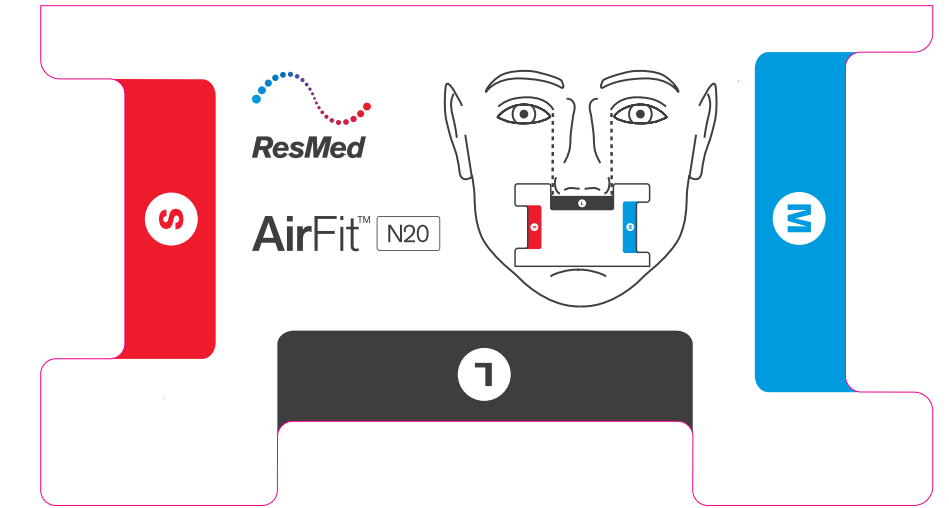


Sizing tips

AirFit N20 has three interchangeable cushion sizes - small, medium and large. The modular design of the AirFit N20 means each size cushion easily clicks into the same mask frame, so you can swap between them with ease for more flexibility.

We recommend that you refer to the mask fitting template to gauge which size is the most suitable for each of your patients.

You can download it on [ResMed.com/AirFitN20](https://www.resmed.com/AirFitN20)



Real size template

Minimal parts make the AirFit N20 easy to use and clean

- Soft and gentle**
The plush headgear is specifically designed for extra softness and to help ensure patients settle into therapy quickly and comfortably.
- Dependable seal**
Set patients up with a reliable seal thanks to the InfinitySeal silicone cushion - designed to prevent blow-outs, tolerate misfitting and seal well under variable pressures.
- Extra movement**
A short, flexible tube interconnects the elbow to the machine tube. It's designed to allow patients to move more easily without encountering tube drag or leakage.
- Soft frame**
Padding has been seamlessly incorporated into the face-side of the frame to ensure comfort at every touchpoint.
- Visual freedom**
Let patients see and do more in bed with an under-the-eye frame that combines all-round stability and less facial contact.
- Fast fitting time**
Taking the mask on and off is convenient and easy, with magnetic clips that guide the headgear to the frame in seconds.

- Elbow and short tube: 63565
- Frame: 63566, 63567 for Her
- Cushion: 63550 (S), 63551 (M), 63552 (L)
- Headgear clips (x2): 63564



AirFit N20 for Her

Designed specifically for women, it offers a smaller size to suit female facial contours.



AirFit N20 headgear
63560 (S)
63561 (STD)
63562 (L)



AirFit N20 for Her headgear
63558

Product codes

	ANZ
AirFit N20 for Her: Small	63520
AirFit N20: Medium	63521
AirFit N20: Large	63522

